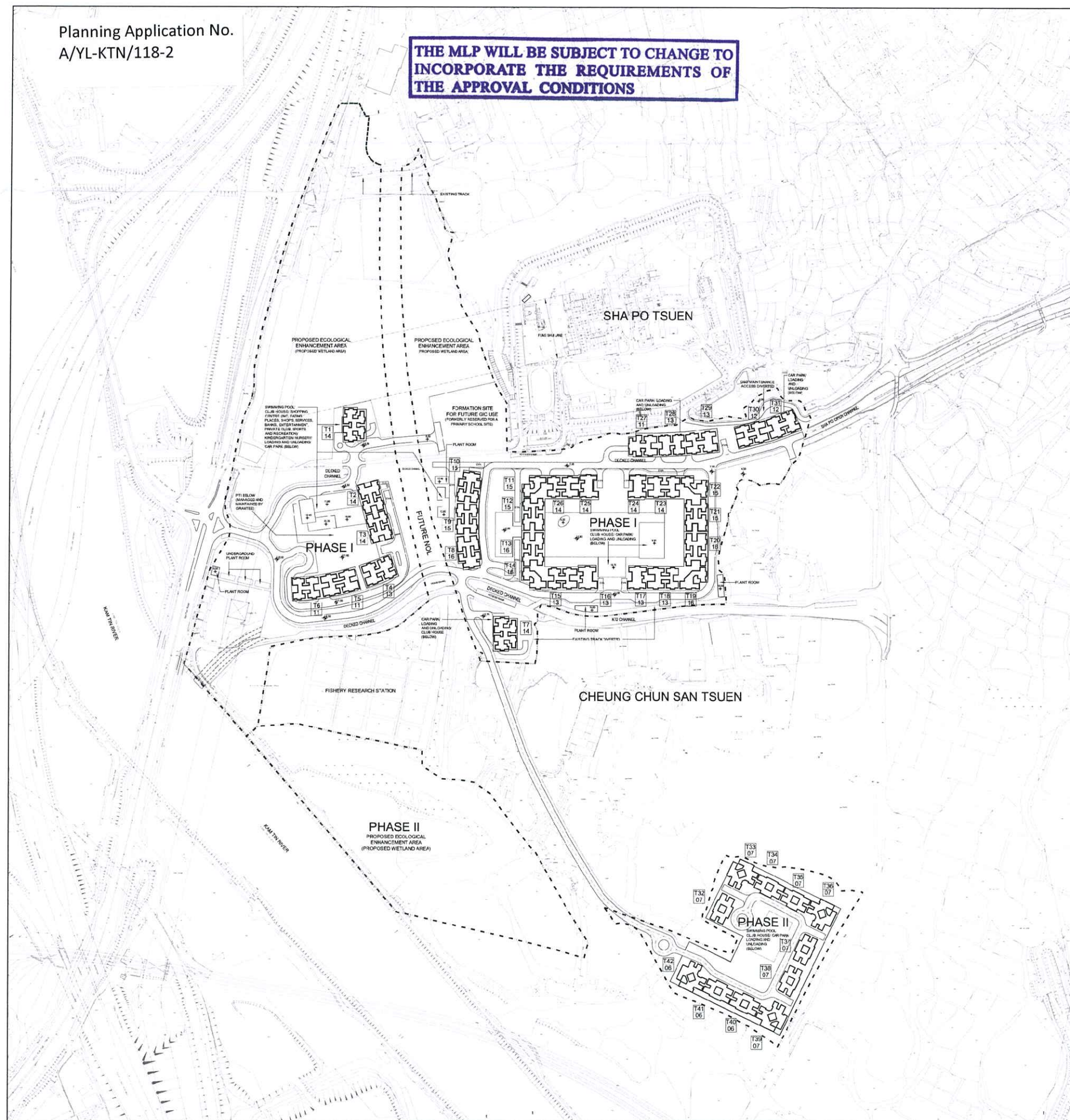


Planning Application No.
A/YL-KTN/118-2

THE MLP WILL BE SUBJECT TO CHANGE TO
INCORPORATE THE REQUIREMENTS OF
THE APPROVAL CONDITIONS



茲證明城市規劃委員會已根據城市規劃條例第4A(3)條的規定而於
二零一二年九月七日批准本總綱發展藍圖。
I hereby certify, as required under S.4A(3) of the Town Planning Ordinance, that this
Master Layout Plan was approved by the Town Planning Board on 7. 9. 2012.

signed Ms Bernadette Linn 蕭漢豪
Chairman, Town Planning Board 城市規劃委員會主席 簽署

LEGEND

TX TOWER NUMBER
XX NUMBER OF DOMESTIC STOREY

Project

PROPOSED RESIDENTIAL
DEVELOPMENT
AT YUEN LONG NORTH-EAST
OF AU TAU ROUNDABOUT

Project No. 11048NT

Drawing

MASTER LAYOUT PLAN
APPROVED SCHEME

Scale

0 20 60 100 200
1 : 5000

Date

SEPTEMBER 2012

Figure

1.1

**RONALD LU
& PARTNERS**

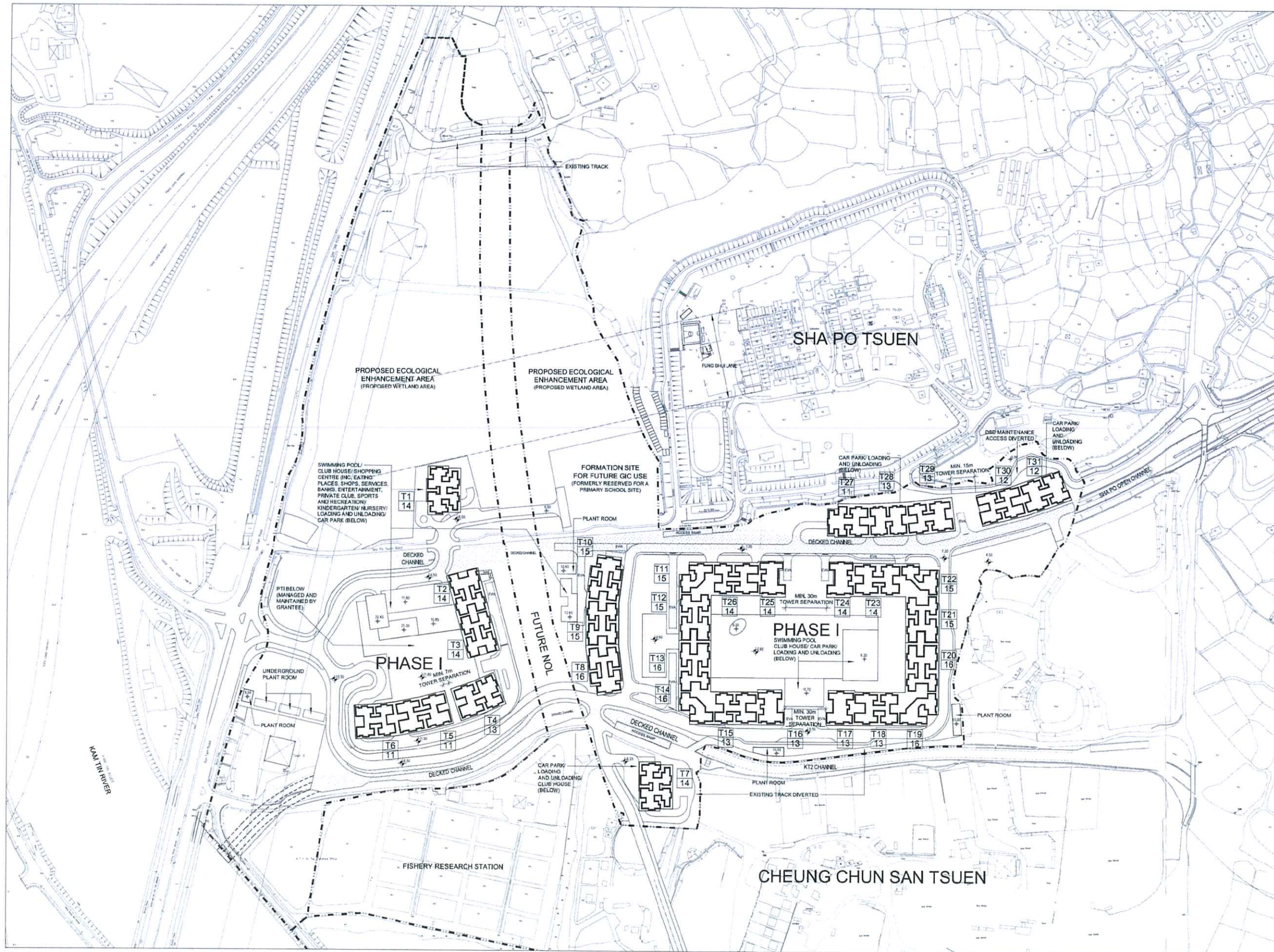
ARCHITECTS | PLANNERS | INTERIOR DESIGNERS

Ronald Lu & Partners (Hong Kong) Ltd.

呂元祥建築師事務所(香港)有限公司

33rd Floor, Wu Chung House,
213 Queen's Road East,
Wanchai, Hong Kong

Tel : (852) 2891 2212
Fax : (852) 2834 5442



NOTE:
PODIUM LINE INDICATIVE ONLY,
SUBJECT TO DETAILED DESIGN

LEGEND

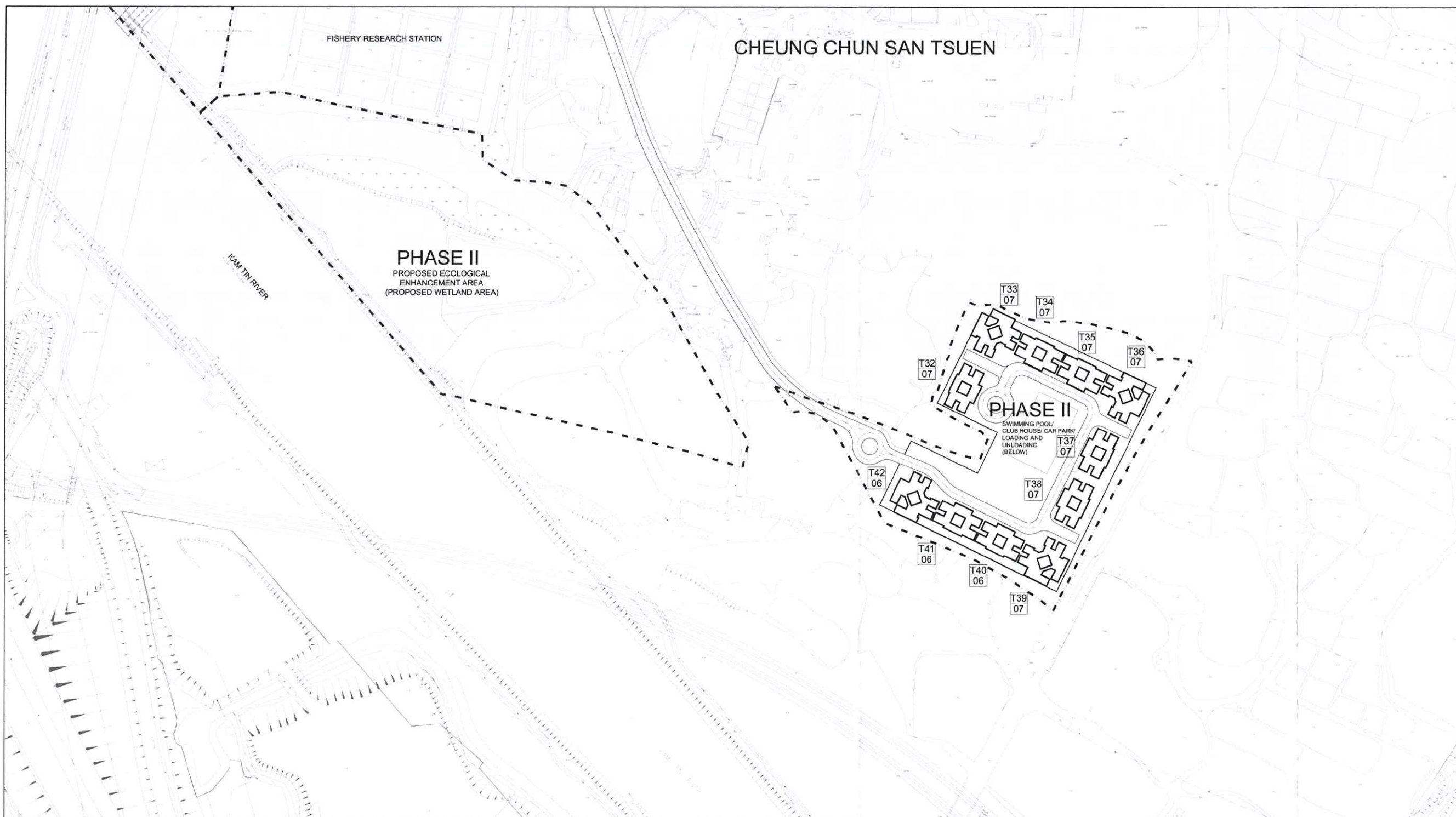
TX TOWER NUMBER
XX NUMBER OF DOMESTIC STOREY

Project
PROPOSED RESIDENTIAL DEVELOPMENT AT YUEN LONG NORTH-EAST OF AU TAU ROUNDABOUT
Project No. 11048NT
Drawing
MASTER LAYOUT PLAN APPROVED SCHEME PART PLAN (PHASE 1)
Scale
0 20 40 60 100 1 : 3000
Date
SEPTEMBER 2012
Figure 1.2

**RONALD LU
& PARTNERS**

ARCHITECTS | PLANNERS | INTERIOR DESIGNERS
Ronald Lu & Partners (Hong Kong) Ltd.
呂元祥建築師事務所(香港)有限公司
33rd Floor, Wu Chung House,
213 Queen's Road East,
Wanchai, Hong Kong

Tel : (852) 2891 2212
Fax : (852) 2834 5442



LEGEND

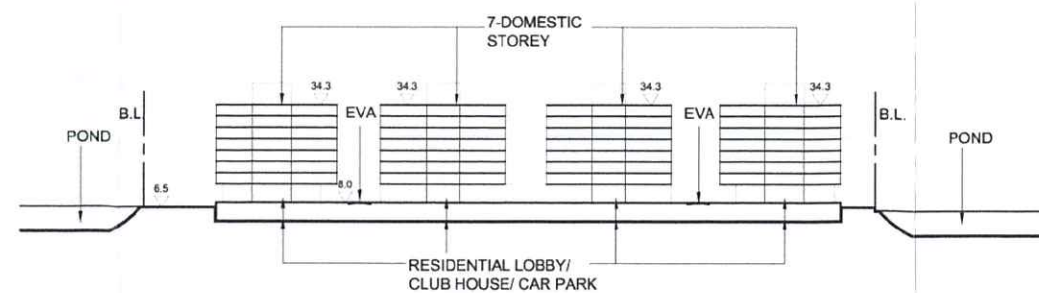
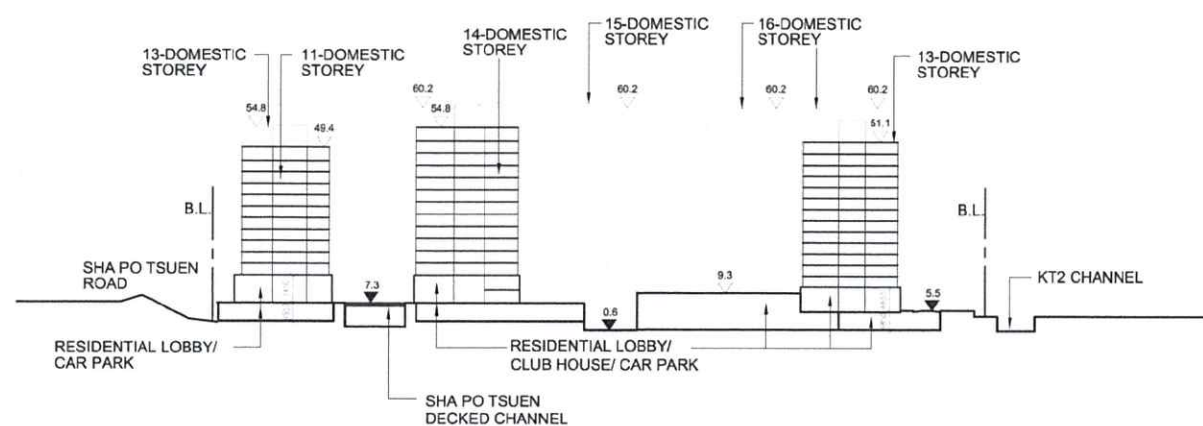
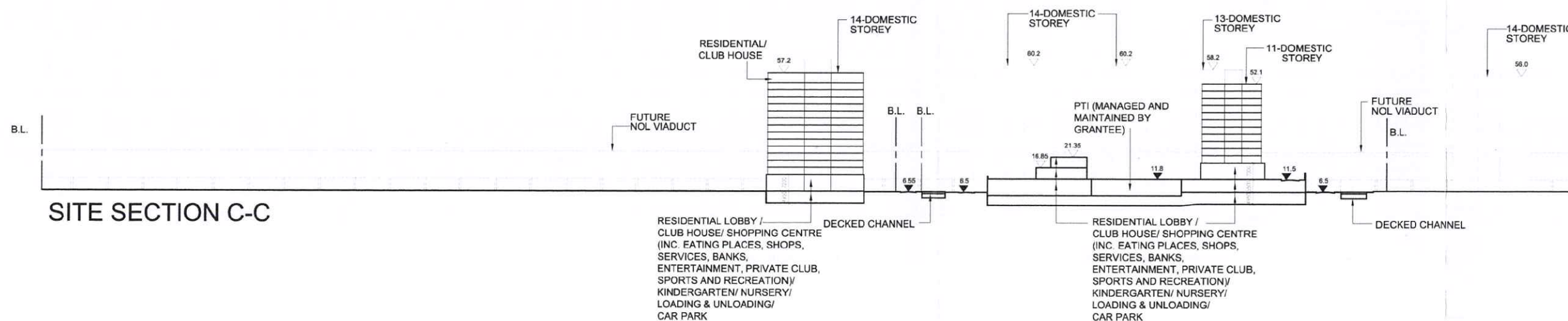
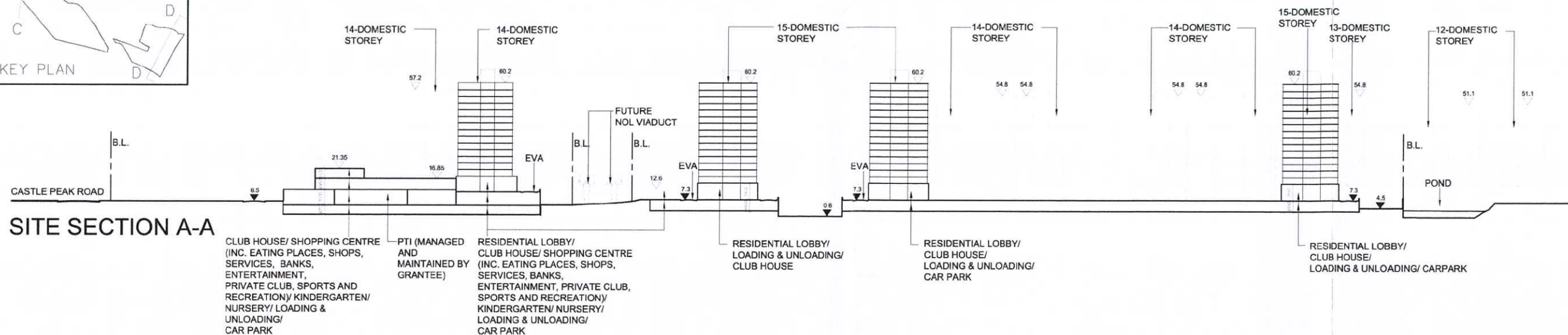
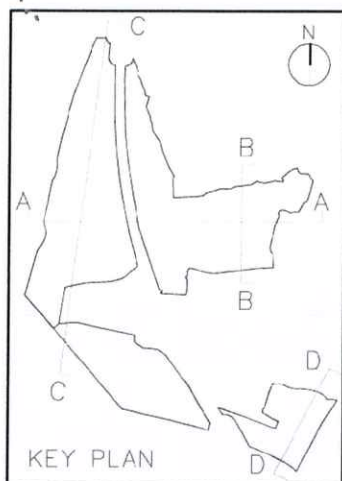
TX	TOWER NUMBER
XX	NUMBER OF DOMESTIC STOREY

Project
PROPOSED RESIDENTIAL DEVELOPMENT AT YUEN LONG NORTH-EAST OF AU TAU ROUNDABOUT
Project No. 11048NT
Drawing
MASTER LAYOUT PLAN APPROVED SCHEME
PART PLAN (PHASE 2)
Scale
0 20 40 60 100 1 : 3000
Dcte
SEPTEMBER 2012
Figure
1.3

RONALD LU & PARTNERS

ARCHITECTS | PLANNERS | INTERIOR DESIGNERS
Ronald Lu & Partners (Hong Kong) Ltd.
呂元祥建築師事務所(香港)有限公司
33rd Floor, Wu Chung House,
213 Queen's Road East,
Wanchai, Hong Kong

Tel : (852) 2891 2212
Fax : (852) 2834 5442



Project
PROPOSED RESIDENTIAL
DEVELOPMENT AT YUEN
LONG NORTH-EAST OF
AU TAU ROUNDABOUT

Project No. 11048NT

Drawing
SITE SECTIONS
APPROVED SCHEME

Scale
NOT TO SCALE

Date
SEPTEMBER 2012

Figure 1.4

**RONALD LU
& PARTNERS**

ARCHITECTS | PLANNERS | INTERIOR DESIGNERS

Ronald Lu & Partners (Hong Kong) Ltd.
呂元祥建築師事務所(香港)有限公司

33rd Floor, Wu Chung House,
213 Queen's Road East,
Wanchai, Hong Kong

Tel : (852) 2891 2212
Fax : (852) 2834 5442

